

# CLEAN-ROLL<sup>®</sup>

HIGH PERFORMANCE ROLLING DOOR

## The Original USDA-Compliant High-Speed Rolling Door

The Clean-Roll door is the original high-speed roll door designed specifically to meet the most comprehensive and stringent hygienic standards in the world – a combination of USDA, FDA, NSF and ISO standards.

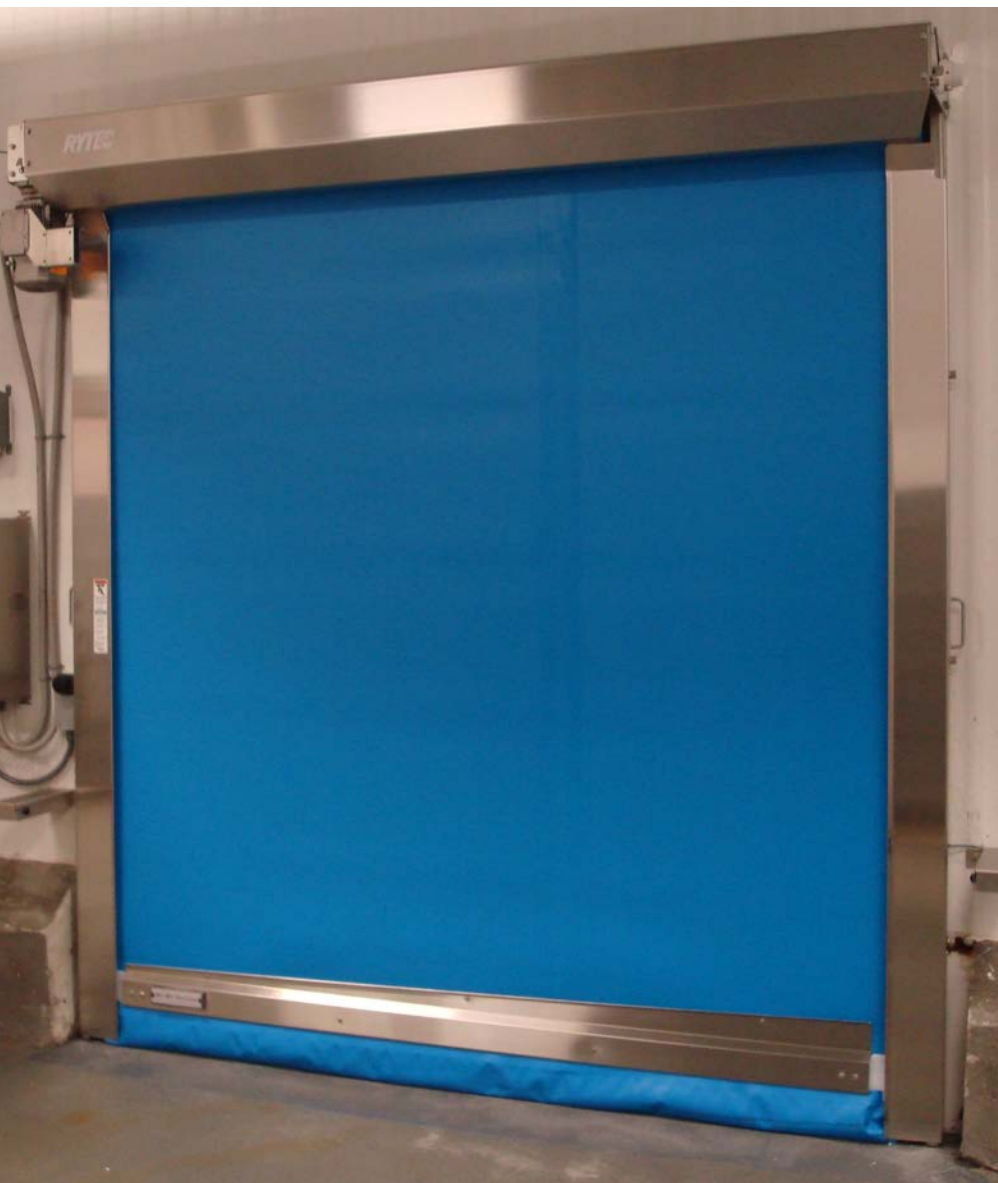
All of the door's components are fabricated of stainless steel or USDA compliant materials. Designed to allow complete washdown and includes many more sanitary design features that make it the natural choice for applications that demand absolute cleanliness. Plus, it provides all the low-maintenance, energy savings and productivity benefits of a high-speed door.

**Sanitary Design** - Engineered to meet USDA hygienic standards for meat, poultry, dairy and seafood applications. The entire door is designed to be spray washed, yet its sanitary design prevents liquid contaminants from dripping into the traffic pathway and virtually eliminates potential sites for bacteria manifestation.

**Takes a Hit** - The Clean-Set™ Break-Away™ bottom bar with Ry-Wi™ wireless can be reset in just seconds, without tools, virtually eliminating downtime and repair costs.

**Energy Efficient** - High speed operation conserves energy and maintains constant climate control while helping to minimize infiltration of airborne pathogens.

**Safe** - Pneumatic, dual-chamber reversing edge and thru-beam photo eyes. Optional full-width, heat-sealed window provides excellent visibility.



# CLEAN-ROLL®

## HIGH PERFORMANCE ROLLING DOOR

### Model Name

- Rytec® Clean-Roll® Door

### Size and Dimensions

- Up to 12' W x 12' H
- 4.5" side column projection
- 23" headroom above lintel
- 16" head projection
- 9" side clearance, non-drive
- 17" side clearance, motor side
- Left or right hand motor placement

### Safety

- Thru-beam photo eyes
- Ry-Wi™ wireless system
- Dual-chamber pneumatic reversing edge

### Available Options

- Blue or White USDA-Compliant Panel
- Bolt-on Stainless Steel Wind Ribs
- Vulcanized Vision Windows
- Counterbalanced Egress System

### Warranty

- One-year limited warranty on materials and workmanship.
- Three-year limited warranty on 2-ply Rilon™ panel material.



### Stainless Steel Construction

- Stainless steel columns with patented design allow for easy removal.
- Stainless steel roll drum with stainless piano hinge.
- Hinged drip guard shrouds roll drum and panel material but lifts up for easy cleaning.

### Quick-Set™ Repairs after Impact

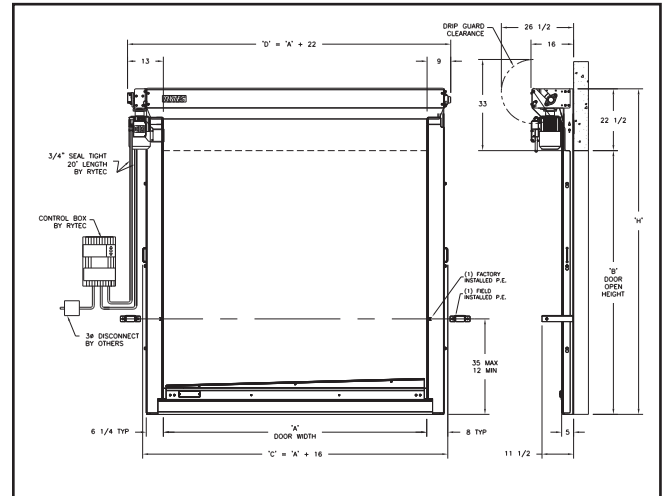
- Engineered to Take a Hit™.
- Clean-Set, Break-Away tabs and stainless steel bottom bar release in either direction without damage to the door.
- Pneumatic dual-chamber reversing edge is standard.



### Electrical Controls

- System 4™ controller housed in a NEMA 4X rated enclosure with factory set parameters.
- Intelligent processor monitors and controls power consumption.
- Advanced self-diagnostics for troubleshooting.

System 4 shown with optional rotary disconnect



### Engineered for Cleanability

- Constructed of entirely USDA and FDA compliant materials.
- Stainless steel piano hinge means there is no excess fabric on the drum when in the closed position, reducing bacteria build-up.
- Patented drum designed to rotate 120° revolution to allow complete cleaning of drum and fabric.
- Hinged drip guard lifts up to facilitate easy cleaning while the integrated gutter prevents liquid contaminants from dripping into the traffic pathway.
- Patented, sloped gutter system on bottom bar prevents liquid contaminants from dripping into the doorway.



Hinged drip guard lifts up for easy cleaning



**888-GO-RYTEC** RytecDoors.com  
Tel 262-677-9046 Fax 262-677-2058  
One Cedar Parkway Jackson, WI 53037-0403