

TURBO-SEAL®

HIGH PERFORMANCE ROLLING DOOR

The World's Fastest, Low Profile Break-Away Door

Where traffic patterns near the doorway are tight and speed is critical, the Turbo-Seal ultra high-speed door is your best solution. Such situations tend to create greater potential for doors to get hit because of the relatively short approach to the door, which in some cases forces equipment to enter the door at an angle. The extra speed (up to 100 inches per second) offered by the Turbo-Seal minimizes that potential by getting the door out of the way faster. And even if it does get hit, it can be reset without tools in just seconds.

Fast – Opens at up to 100 inches per second.

Safe – Dual electric photo eyes and pneumatic, dual-chamber reversing edge in bottom bar are standard. Optional, replaceable windows for visibility. Optional light curtain system available.

Takes a Hit – Quick-Set™, Break-Away™ tabs allow bottom bar to be reset in just seconds, without tools, virtually eliminating downtime and repair costs.

Low Profile – Side columns are only 8 inches wide with 6 inches of projection. Fits virtually anywhere.

Ry-Wi™ System - State-of-the-art wireless technology eliminates the need for a coil cord. Two-way communication and total frequency control ensure safety and eliminate interference.

Low Maintenance – Dual guided counterweights ensure smooth, virtually maintenance-free operation.

Easy Installation – Modular construction and pre-wiring allow for quick installation.

Shown with optional vision window



TURBO-SEAL[®]

HIGH PERFORMANCE ROLLING DOOR

Model Name

- Rytec[®] Turbo-Seal[®] Door

Size and Dimensions

- Up to 12' W x 16' H
- 23" headroom above lintel
- 22" head projection
- 10.5" side clearances
- Motor on left, junction box for wiring in middle
- 7" side column projection
- 8" side column width

Available Options

- 17" x 17" Vision Windows
- Wind ribs
- Self-Repair side frame configuration

Warranty

- One-year limited warranty on materials and workmanship.
- Three-year limited warranty on 2-ply Rilon[™] panel material.
- Lifetime warranty on counterweights.



Break-Away tabs are easily reinserted into the side columns

Easy Reset

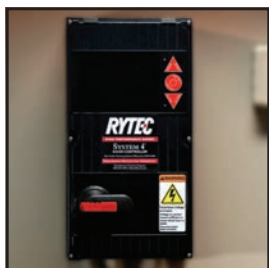
- Quick-Set, Break-Away tabs allow bottom bar to be reset in just seconds, without tools, after taking a hit.
- Cut off switch between tabs deactivates motor when door is hit.



Counterweights within side column assist the motor in opening and closing the door

Counterbalance System

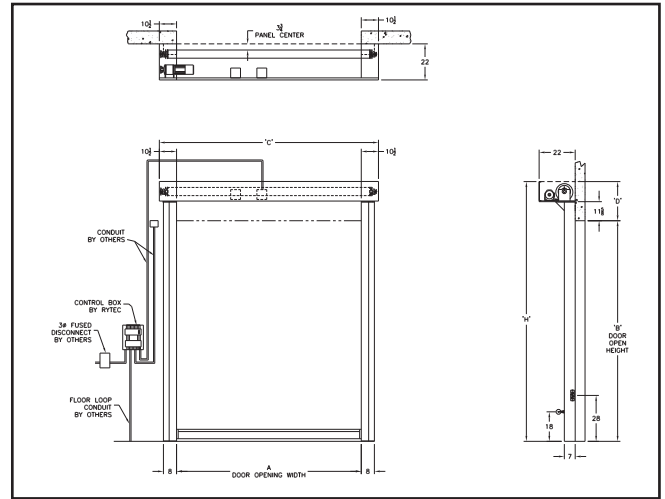
- Guided counterweight design eliminates stress and strain on the motor.
- Counterweights allow for the use of a smaller motor, resulting in increased energy savings.



System 4 shown with optional rotary disconnect

Electrical Controls

- System 4[™] controller housed in a NEMA 4X rated enclosure with factory set parameters.
- Intelligent processor monitors and controls power consumption.
- Advanced self-diagnostics for troubleshooting.



Safety

- Standard dual thru-beam photo eyes.
- Standard sensitivity-adjustable pneumatic reversing edge.
- Standard Ry-Wi[™] Wireless System
- Standard Pathwatch[™] threshold warning lights



Pathwatch Safety Light System indicates door closing Turbo-Seal Insulated pictured above

Drive System

- Three-phase, variable speed AC Drive provides soft acceleration and deceleration.
- Independent opening and closing speeds provide flexibility to accommodate any application.



888-GO-RYTEC RytecDoors.com
Tel 262-677-9046 Fax 262-677-2058
One Cedar Parkway Jackson, WI 53037-0403